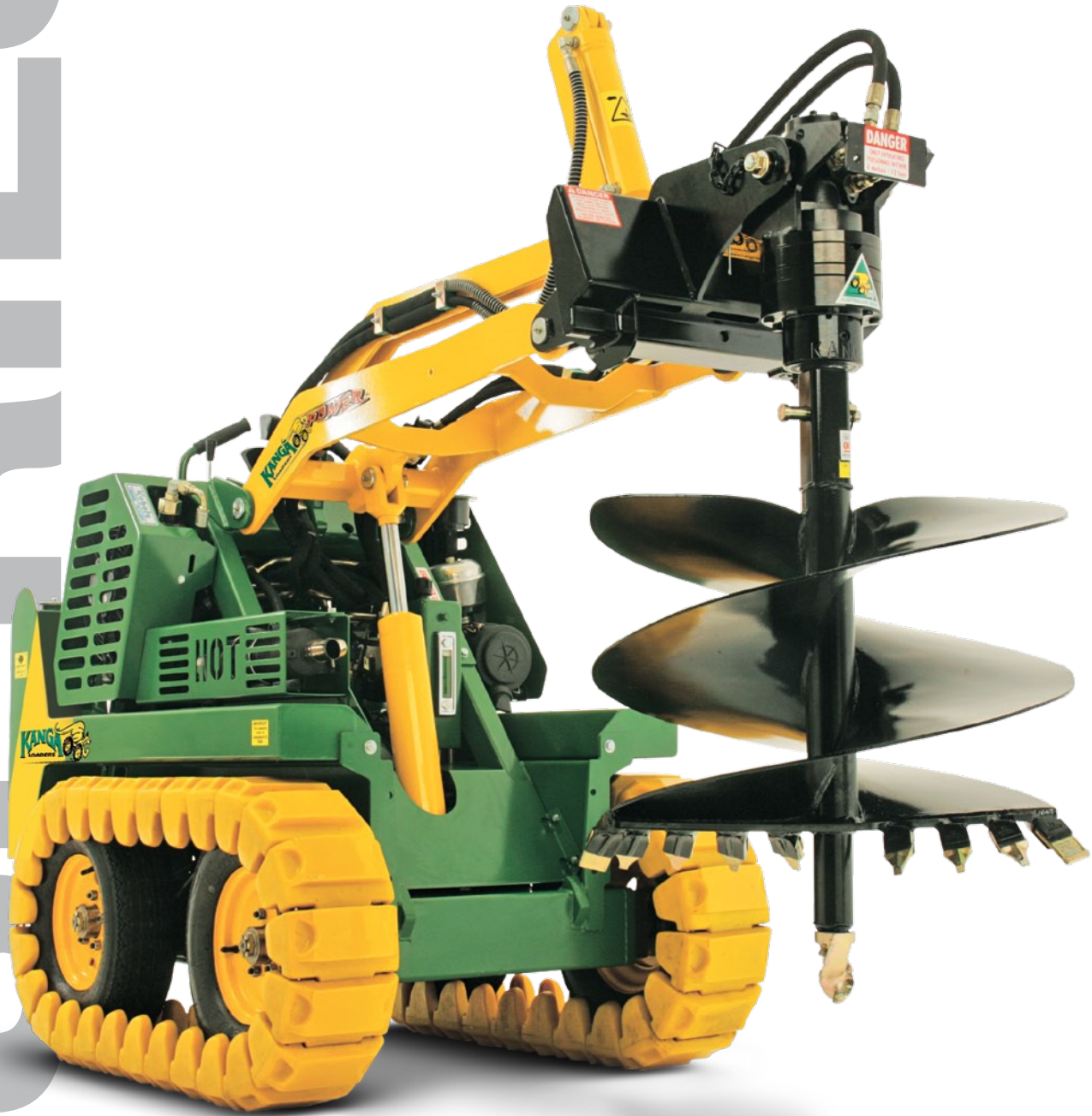


KANGA MULTI-TASK COMPACT SKID STEER LOADERS

S
E
R
I
E
S



ADVANCED ENGINEERING TURNING HARD WORK INTO EASY BUSINESS

INTRODUCING THE ALL-NEW 7 SERIES KANGA

Everything you've always admired about Kanga... and more.

The inventors of the world's first 'stand-on' skid steer loader introduce the range of new 7 series Kanga multi-task compact skid-steer loaders.

We've re-designed the 7 series from the ground up to out-perform and out-feature any other brand of compact skid-steer loader on the market today.

Every Kanga is engineered for safe, user-friendly operation. Peace-of-mind.

Kanga strictly adhere to government guidelines for Workplace Health and Safety and operate under World's Best Practices incorporating H.A.V (Hand Arm Vibration) standards as well as internationally recognised Risk Management studies and procedures.

No wonder individuals and businesses, looking for the best value multi-task compact skid-steer on the market, turn to Kanga.

All models incorporate standard features that offer Kanga operators an edge in power, speed, durability, ease-of-use and safety. If you compare you will see why Kanga multi-task compact skid-steer loaders are being successfully exported to rapidly-expanding markets throughout the world.

Standard Kanga features

✓ Self-levelling bucket

Linkage makes it impossible for operator to tip load over self or machine. Reduces cycle times.

Safe, easy operation even for the 'handyman'.

✓ Generous bucket rollback

Allows easy filling and **safe** transportation without load spillage, arms fully lowered (lower centre of gravity).

✓ Correctly sized bucket

Ensures load is limited to rating (wet gravel or sand).

✓ Machine balance

Superior design enables loader to remain balanced either fully loaded or bucket removed.

✓ Safety relief valve

Prevents unsafe overloading of systems.

✓ Rupture-proof fuel tanks

Twin long range (49Ltr/13USgal), heavy gauge steel, not plastic. Up to 3 days operation means less re-fuelling downtime.

✓ Perforated operator platform

Non-slip, free from hot engine obstruction.

✓ Soft-touch controls

Simple, easy-to-understand control panel – minimises operator fatigue.

✓ Certificate of Engineering

'CE' Conformité Européene (Quality consistency).

✓ Safety auxiliary cut-out

Safety auxiliary cut out (operator presence).

✓ Long-life linkage pins

Greasable, with hardened-steel bushes.

✓ Enclosed hydraulic wheel motors

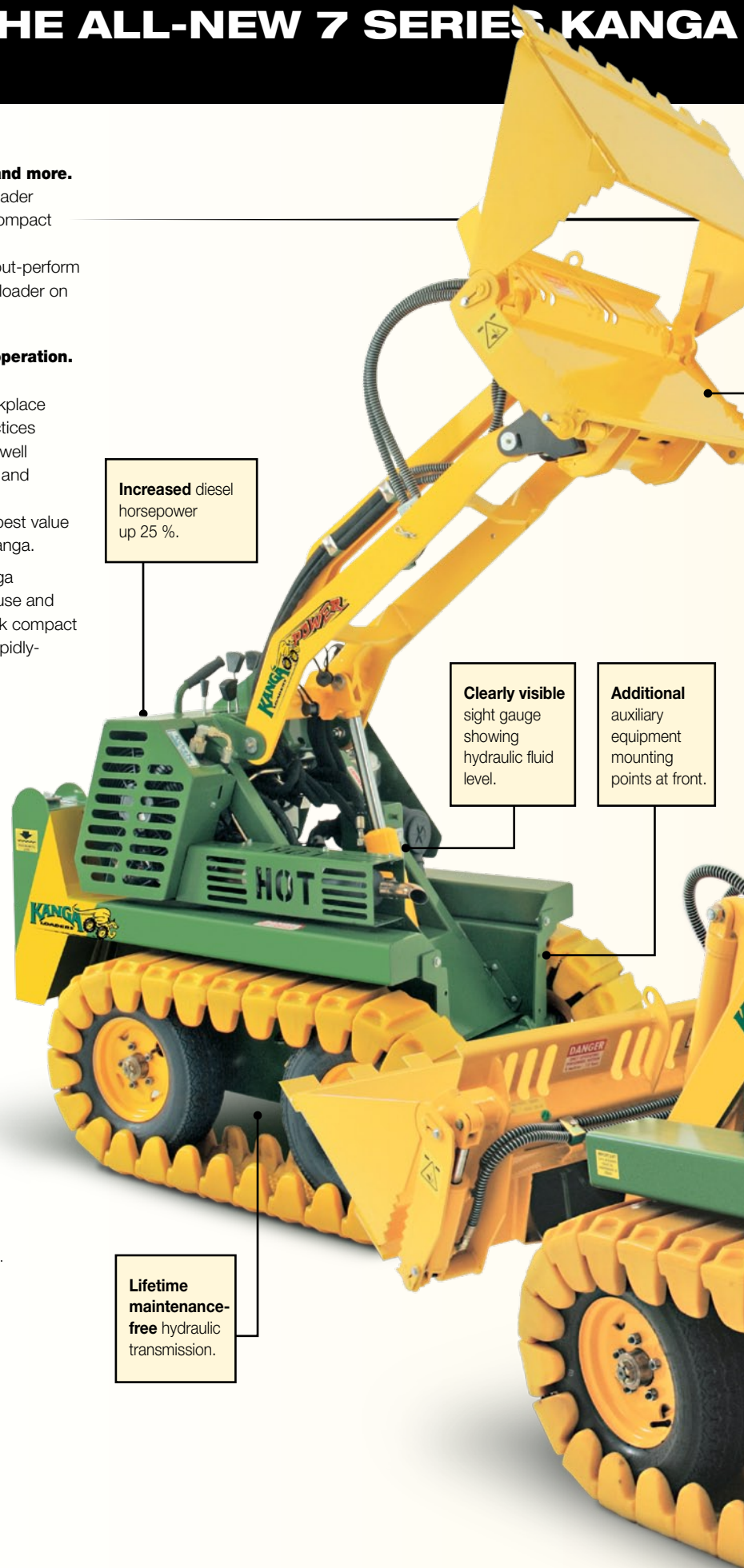
Prevents damage, yet easily accessible.

✓ Petrol or diesel engines

The right capacity to suit your needs and budget.

✓ Heavy duty Donaldson air cleaner

✓ No transmission chains or sprockets



Increased diesel horsepower up to 25 %.

Clearly visible sight gauge showing hydraulic fluid level.

Additional auxiliary equipment mounting points at front.

Lifetime maintenance-free hydraulic transmission.

MULTI-TASK COMPACT SKID STEER LOADERS

Look what's new in the latest 7 series

Increased working load of 260kg (573lbs) from 250kg (551lb) up 4%.

Increased lift height to 1865mm (73.4") from 1795mm (70.5") up 4%.

Increased reach to 1060mm (42") from 1040mm (41") up 2%.

Increased break out force of 20% for the 25hp diesel option to 600kg (1323lb).

Improved instrumentation, electric fuel gauge now standard equipment.

Full instrumentation. Water, engine oil, charge, glow plugs (diesel powered models). Engine oil, charge (petrol powered models). Auxiliary power outlet 12V (all models).

Improved soft touch controls even smoother to drive.
Improved operator ergonomics.
Improved safety, controls raised to reduce operator reach and fatigue.

12V auxiliary power outlet

Cup Holder

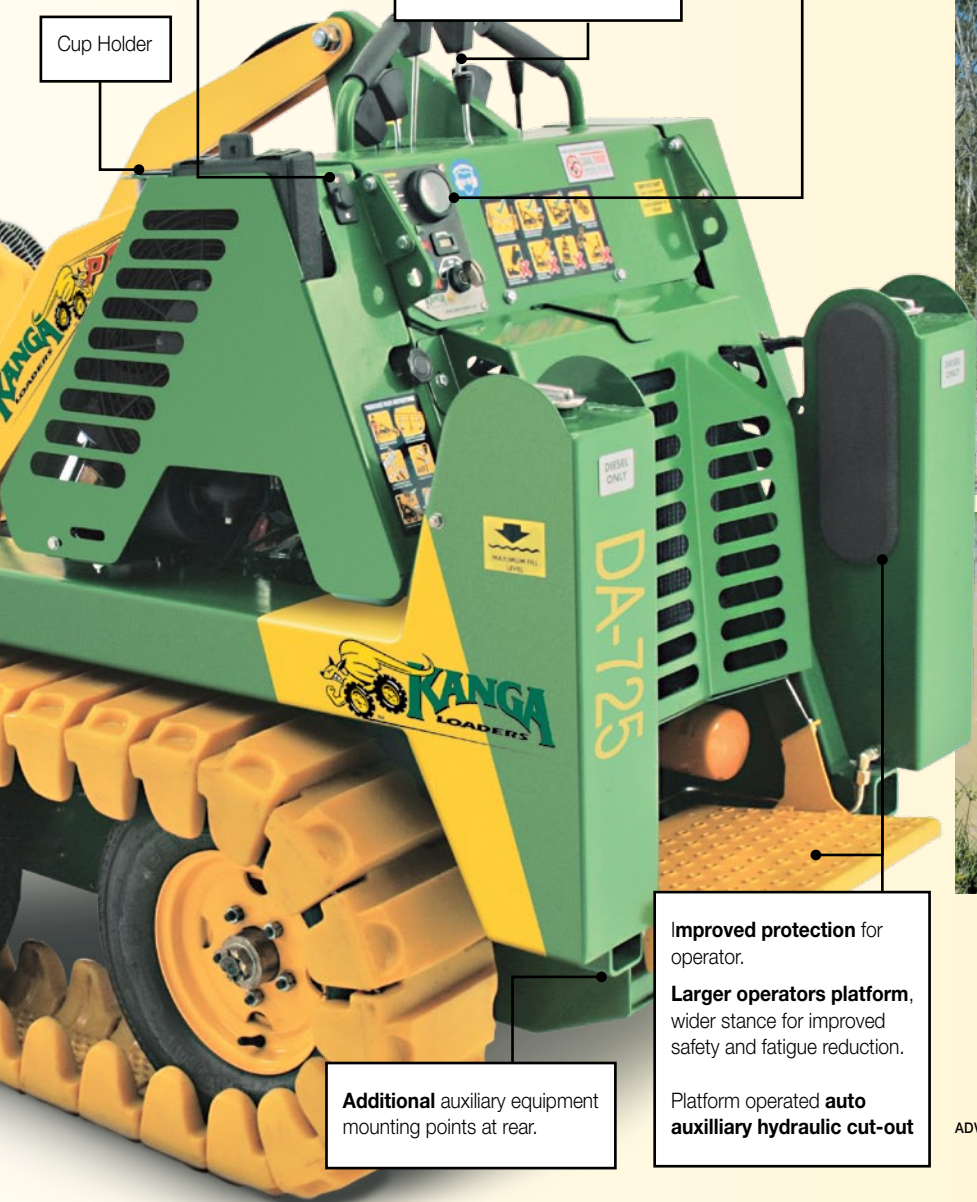


Not just a face-lift, an extreme make-over... more safety, more productivity, more reasons to buy Kanga.

All models feature **improved serviceability** with easier access to engine oil filter, hydraulic return filter and hydraulic pressure filter. Benefit from almost instant access to the hydraulic reservoir inspection cover. Hydraulic wheel motors are easily reached by just removing the machine's wheels.

No transmission servicing
 The new transmission is lifetime maintenance free.

These new features further reduce service and maintenance time, creating lower operating cost and increased productivity.



Improved protection for operator.
Larger operators platform, wider stance for improved safety and fatigue reduction.
 Platform operated **auto auxiliary hydraulic cut-out**

Additional auxiliary equipment mounting points at rear.



ADVANCED ENGINEERING TURNING HARD WORK INTO EASY BUSINESS

PERFORMANCE	GA-724		DA-725	
Max. Lift Capacity	260 kg	573 lbs	260 kg	573 lbs
Travel Speed	7.0 km/h	4.35 mph	7.7 km/h	4.78 mph
Operating Weight (inc. 4in1 Bucket)	940 kg	2072 lbs	1025 kg	2260 lbs
Fuel Capacity	49 L	12.94 US gal	49 L	12.94 US gal

ENGINE	Honda GX670		Kubota D902	
Manufacturer	Honda GX670		Kubota D902	
Power	17.9 kW	24 hp	18.5 kW	25 hp

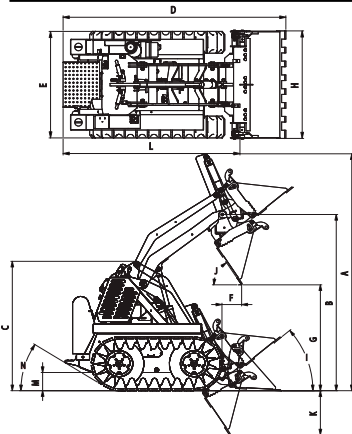
DRIVE SYSTEM	Soft Touch Hand Levers		Soft Touch Hand Levers	
Drive Control	Soft Touch Hand Levers		Soft Touch Hand Levers	
Throttle Control	Hand Lever		Hand Lever	
Tracks	Direct Drive Hydraulic Motors		Direct Drive Hydraulic Motors	

HYDRAULICS	11.3 cc/rev		12.5 cc/rev	
Gear Pump Displacement	11.3 cc/rev	0.69 cu.in/rev	12.5 cc/rev	0.76 cu.in/rev
Pump Output	40.7 L/min	10.75 US gal/min	45 L/min	11.9 US gal/min
System Pressure	203 bar	2950 psi	220 bar	3200 psi
Hyd. Reservoir Capacity	72 L	19 US gal	72 L	19 US gal

BUCKETS	0.1 m³		0.1 m³	
Standard Bucket Capacity	0.1 m³	3.5 cu.ft	0.1 m³	3.5 cu.ft
4 in 1 Bucket Capacity	0.1 m³	3.5 cu.ft	0.1 m³	3.5 cu.ft

DIMENSIONS	2510 mm		2510 mm	
A Max Operating Height	2510 mm	98.8"	2510 mm	98.8"
B Height to Hinge Pin	1865 mm	73.4"	1865 mm	73.4"
C Overall Height	1350 mm	53.1"	1350 mm	53.1"
D Overall Length With Bucket	2200 mm	86.6"	2200 mm	86.6"
E Overall Track Width	1040 mm	41"	1040 mm	41"
F Bucket Reach at 40°	400 mm	15.7"	400 mm	15.7"
Bucket Max Reach (Level)	1010 mm	39.8"	1010 mm	39.8"
G Dump Height Std. Bucket	1140 mm	44.9"	1140 mm	44.9"
Dump Height 4 in 1 Bucket	1865 mm	43.7"	1865 mm	73.4"
H Bucket Width	1050 mm	41.3"	1050 mm	41.3"
I Bucket Max Roll Back	40°		40°	
J Bucket Max Dump Angle	60°		60°	
K Ground Penetration	420 mm	16.5"	420 mm	16.5"
L Overall Length Less Bucket	1660 mm	65.4"	1660 mm	65.4"
M Ground Clearance	195 mm	7.7"	195 mm	7.7"
N Angle of Departure	41°		41°	
Approach Angle	90°		90°	

Due to a policy of on-going research and development, Kanga reserves the right to change equipment specifications without prior notice. Please contact your Kanga Dealer for further information.



Dealer Stamp

Australian designed, Australian made, Australian owned. For the complete range of Kanga Loaders, visit www.kanga-loader.com

For further information or details of your nearest Kanga dealer
Phone **1800 243 643** or email: sales@kanga-loader.com

AUSTRALIA: Brisbane • Gold Coast • Sydney • Canberra • Melbourne • Adelaide • Perth
NEW ZEALAND • UNITED KINGDOM • USA • SOUTH AFRICA



ADVANCED ENGINEERING TURNING HARD WORK INTO EASY BUSINESS